

## Chapter - 2

# Objective and Methodology

---

### 2.1 Objective of the study

The Government of Meghalaya has implemented various Rural Employment Generation Scheme (REGS) in the rural areas of all Districts in Meghalaya – Ri Bhoi, Jaintia Hills, East Khasi Hills, West Khasi Hills, West Garo Hills, South Garo Hills and East Garo Hills. The basic objective of these schemes is to enhance livelihood security in rural areas by providing employment in rural areas. The work can also serve other objectives like generating productive assets, protecting the environment, empowering rural women, reducing rural to urban migration and fostering social equity, etc.

On the basis of the tender floated by the Directorate of Programme Implementation and Evaluation, Government of Meghalaya, the AMC Research Group, New Delhi submitted a project proposal to carry out an evaluation study on REGS in Meghalaya. The proposal was approved by the Directorate of Programme Implementation and Evaluation which decided to conduct an evaluation study of REGS. The study was conducted in all the seven districts in Meghalaya.

The major objective of the evaluation study is to analyse the impact and processes emerged during the initiation and execution of the Rural Employment Guarantee Scheme (REGS) in the State of Meghalaya.

Specifically, the study seeks:

- ❖ To ascertain the implementation of REGS in improving employment opportunities and living condition of the rural poor both in terms of qualitative and quantitative parameters.

- ❖ To ascertain the role of the programme in reducing poverty of rural poor and improving the nutritional standard of their families
- ❖ To ascertain the systems and processes under the programme execution various fields like registration of workers, issues of job cards, preparation of plans, execution of works, co-ordination of different agencies, method of payment, patterns of monitoring, grievance redressal, social audit, etc.
- ❖ Suggestions and recommendation for improving the efficacy and efficiency of the programme implementation

## **2.2 Approach and Methodology**

The methodology adopted for this evaluation study was basically to formulate the strategy using both primary data collection as well as secondary data collection. The primary data collection has been undertaken by the field staff at various levels in the project area, which included meeting and discussion with district officials, main in charge of block, village head, opinion leaders, beneficiaries, non-beneficiaries, village council members etc. Whereas secondary data has been collected from concerned officials at state level, district level, block level and village level involved in implementation of the scheme.

### **Interviews with officials**

Officials involved in the implementation of the scheme at the district, block, and village levels were interviewed to ascertain information regarding the implementation of various employment generation programmes, their experiences in implementation, nature of effects/ impacts observed, factors influencing success of programmes, cases of positives impacts, etc. These discussions helped a lot in studying the nature of constraints / difficulties faced in implementation and to identify corrective measure to enhance the impact of the scheme.

These interviews were conducted with the help of semi-structured interview schedule designed in consultation with the Directorate of Programme Implementation and Evaluation.

### **Observation**

Observation technique is an effective tool of capturing visual information on the condition, use and effects of the various interventions under the programmes. Both structured and unstructured observations were conducted in a natural setting to supplement the information provided by beneficiaries / officials and other representatives.

### **Interviews with beneficiaries**

The impact of the scheme on the intended beneficiaries were assessed through the face to face personal interview with help of semi-structured interview schedule. The schedule were developed so as to help measure the impact on both the individual beneficiary and family towards the scheme.

### **Focus Group discussion**

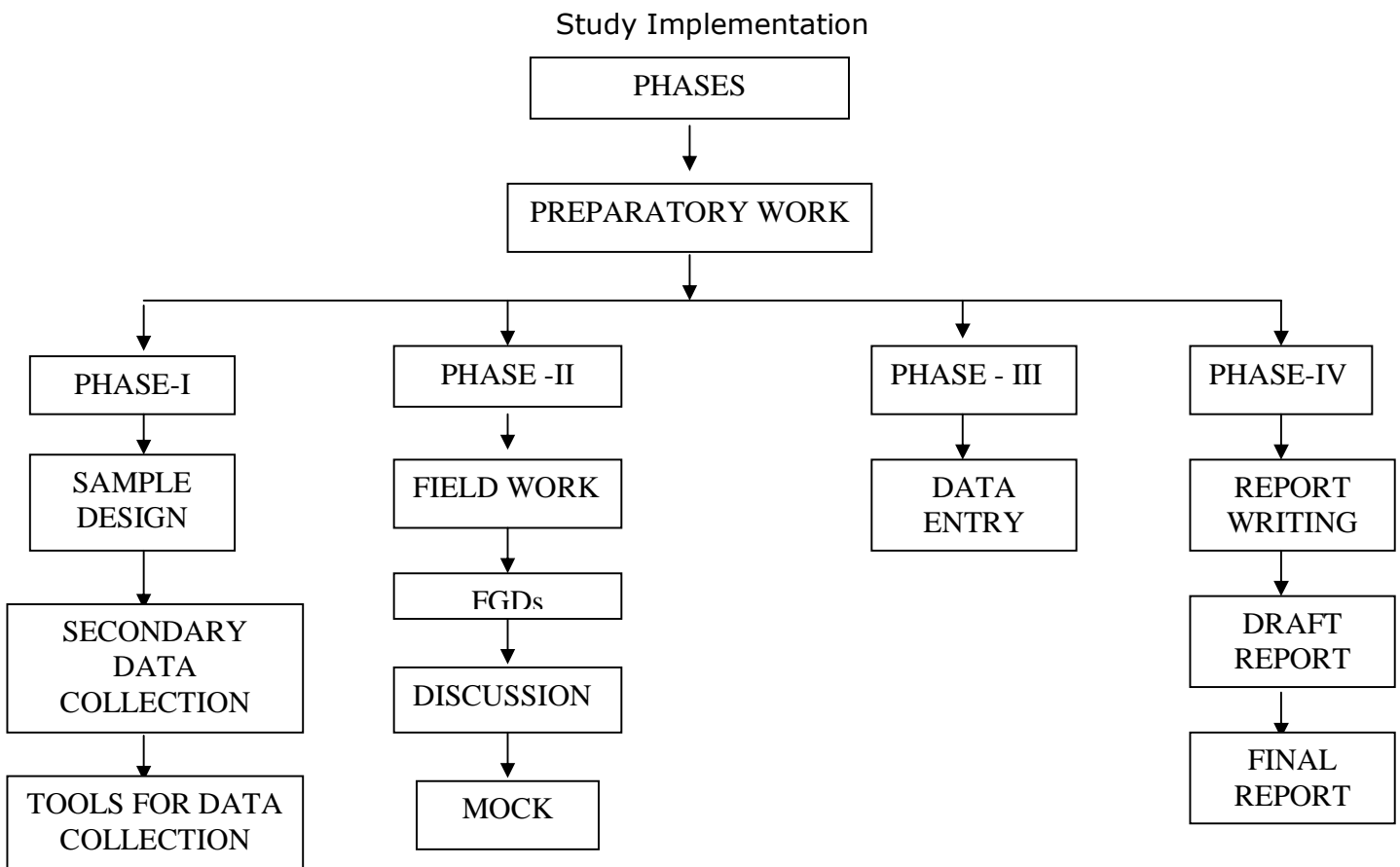
These discussions were conducted amongst a homogeneous group of the targeted audience (beneficiaries, opinion leader, block officials etc.) comprising 8 to 12 members per group.

## **2.3 Implementation of the Evaluation Study**

The study was implemented in the following manner:-

- Preparatory Phase and Sample Design
- Field Work
- Data Analysis
- Report Writing

Figure 2.3



## 2.4 Sampling design

The sampling design for the study has been done in three stages, which were as follows:

- District
- Block
- Village

## **Districts**

All the seven districts of Meghalaya were covered under the study.

## **Blocks**

The basic criteria for selection of blocks was to select one developed and one under developed blocks, so as to provide basis of comparison, keeping the above criteria the blocks were selected on the basis of below given indicators:

- Number of Agricultural Labourers
- Literacy
- Total household population
- Cultivators

From each block minimum seven villages were selected. Effort was made to select beneficiaries from all categories. Attempt was made to cover the beneficiaries for five references year period i.e.: 2003-04, 2004-05, 2005-06, 2006-07 and 2007-08.

The sample sizes for the study were as follows:

Name of District	Name of Block	No. of Villages	No. of beneficiaries interviewed	
			Beneficiaries	Non-Beneficiaries
East Garo Hills	Songsak	10	80	20
	Resubelpara	10	80	20
	<b>Total</b>	<b>20</b>	<b>160</b>	<b>40</b>
East Khasi Hills	Mylliem	7	80	20
	Shella-Bholaganj	7	80	20
	Mawkynrew	7	80	20
	<b>Total</b>	<b>21</b>	<b>240</b>	<b>60</b>
Jaintia Hills	Thadlaskein	7	80	20
	Laskein	7	40	10
	Saipung	7	40	10
	<b>Total</b>	<b>21</b>	<b>160</b>	<b>40</b>

Name of District	Name of Block	No. of Villages	No. of beneficiaries interviewed	
			Beneficiaries	Non-Beneficiaries
Ri Bhoi	Umsning	12	80	20
	<b>Total</b>	<b>12</b>	<b>80</b>	<b>20</b>
South Garo Hills	Baghmara	8	80	20
	Ronggara	10	80	20
	<b>Total</b>	<b>18</b>	<b>160</b>	<b>40</b>
West Garo Hills	Dadengiri	7	80	20
	Rongram	10	80	20
	Tikrikilla	9	80	20
	<b>Total</b>	<b>26</b>	<b>240</b>	<b>60</b>
West Khasi Hills	Mawkrwat	7	80	20
	Nongstoin	6	80	20
	<b>Total</b>	<b>13</b>	<b>160</b>	<b>40</b>

### Organization of field work

For collection of data from about 1500 households/ beneficiaries in seven districts, twelve field investigators were employed in three teams. Thus in all, four Field Investigator visited one district for four weeks for collection of data. The field work was carried out different phases. The field work was carried out for sixty days. Three supervisors were deputed for ensuring quality of field work.

Apart from that, Research executives carried out surprise checks during the field work.

## **Tools for Data Collection**

The following tools were used for data collection:

- 1) District level schedule
- 2) Block level schedule
- 3) Village level schedule
- 4) Beneficiary schedule
- 5) Non-beneficiary schedule
- 6) Opinion leader schedule
- 7) Guide Focus Group Discussion